



Environment  
Canada

Environnement  
Canada

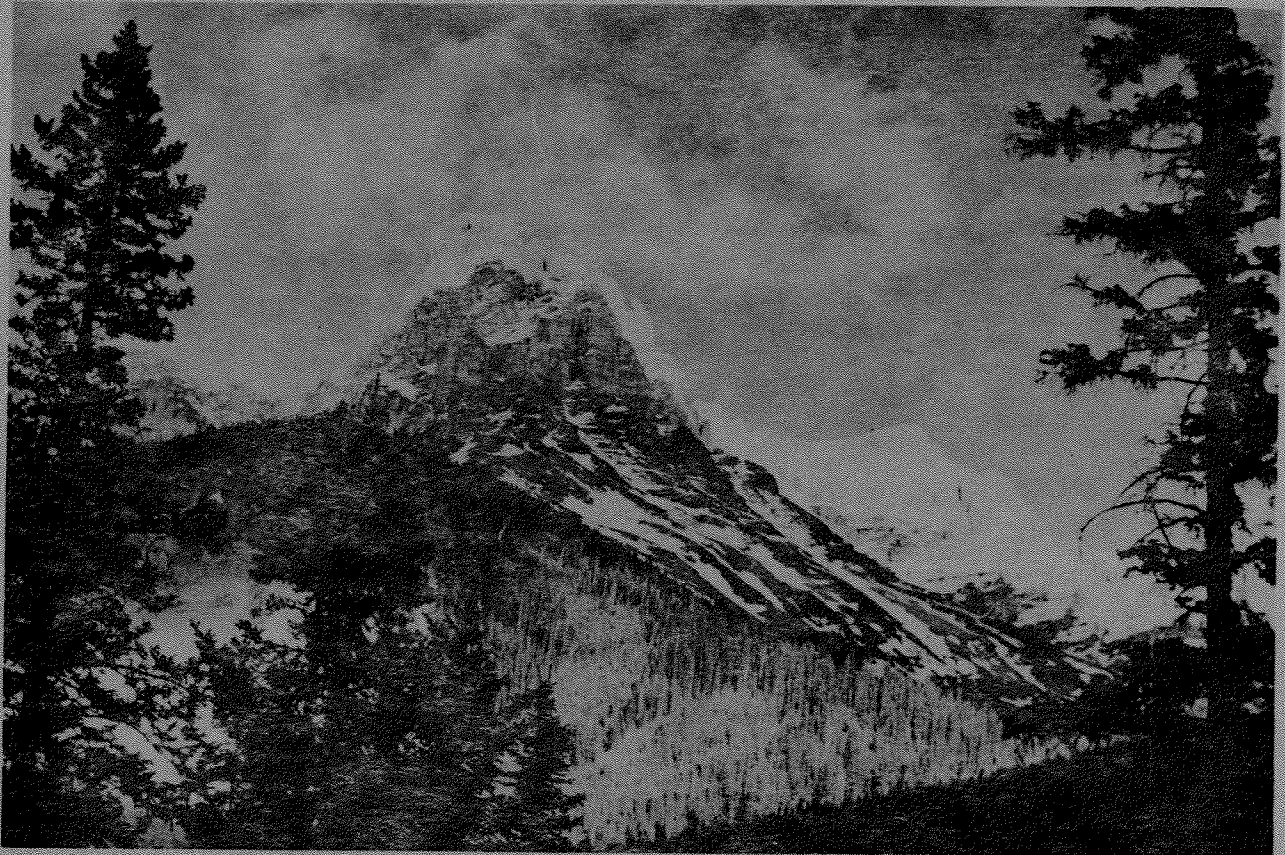
Forestry  
Service

Service  
des Forêts

105

# *Forest Insects Collected in Yoho National Park, 1948 - 1971*

by G. J. Smith and J.C.E. Melvin.



**Report NOR-X-105**

**June, 1974**

northern forest research centre  
edmonton, alberta

FOREST INSECTS COLLECTED IN YOHO  
NATIONAL PARK 1948-1971

By

G.J. SMITH AND J.C.E. MELVIN

REPORT NOR-X-105  
JUNE, 1974

NORTHERN FOREST RESEARCH CENTRE  
CANADIAN FORESTRY SERVICE  
ENVIRONMENT CANADA  
5320 - 122 STREET  
EDMONTON, ALBERTA, CANADA  
T6H 3S5

*TABLE OF CONTENTS*

	<u>Page</u>
INTRODUCTION.....	1
LIST OF COMMON NAMES OF PLANTS USED WITH SCIENTIFIC EQUIVALENTS.....	2
ARACHNIDA.....	3
COLEOPTERA.....	4
DIPTERA.....	12
HEMIPTERA.....	13
HOMOPTERA.....	14
HYMENOPTERA.....	15
LEPIDOPTERA.....	17
NEUROPTERA.....	26

Forests Insects Collected

in

Yoho National Park

1948-1971

by

G.J. Smith and J.C.E. Melvin

Northern Forest Research Centre, Canadian Forestry Service,

Department of the Environment, Edmonton, Alberta

*ABSTRACT*

*Forest insects collected in Yoho National Park from 1948 to 1971 are listed alphabetically by order, family, genus, and species. Hosts, numbers of collections and stages of the insects when collected are shown.*

*RESUME*

*Les insectes forestiers récoltés de 1948 à 1971 dans le parc national du Yoho sont énumérés alphabétiquement selon les ordres, les familles, les genres et les espèces. A ceci s'ajoutent les hôtes, le nombre des récoltes et les stades développement des insectes, s'il y a eu récolte.*

*INTRODUCTION*

The Forest Insect and Disease Survey, operating within a number of federal government departments, has been collecting forest insects in the Prairie Provinces and western National Parks since 1937. The vast majority of collections were made following post-war staff increases. Since 1948, all collections have been recorded on computer tapes, along with pertinent ecological data. Computer print-outs were used to compile the following annotated list of insects collected in Yoho National Park from 1948 to 1971.

As most collections were made by beating foliage over a canvas sheet, some of the hosts shown for adult collections may be inaccurate. Because of the emphasis placed on the collection of some insects for special studies, the numbers of collections do not necessarily reflect the relative abundance of species.

## LIST OF COMMON NAMES OF PLANTS USED

## WITH SCIENTIFIC EQUIVALENTS

Alder	<i>Alnus</i> spp.
Apple	<i>Malus</i> spp.
Aspen, Trembling	<i>Populus tremuloides</i> Michx.
Birch	<i>Betula</i> spp.
Birch, Dwarf	<i>Betula glandulosa</i> Michx.
Birch, White	<i>Betula papyrifera</i> Marsh.
Caragana, Common or Siberian	<i>Caragana arborescens</i> Lam.
Fir	<i>Abies</i> spp.
Fir, Alpine	<i>Abies lasiocarpa</i> (Hook.) Nutt.
Fir, Balsam	<i>Abies balsamea</i> (L.) Mill.
Fir, Douglas	<i>Pseudotsuga menziesii</i> (Mirb.) Franco var. <i>glauca</i> (Beissn) Franco
Hemlock	<i>Tsuga</i> spp.
Hemlock, Mountain	<i>Tsuga mertensiana</i> (Bong.) Carr.
Hemlock, Western	<i>Tsuga heterophylla</i> (Raf.) Sarg.
Juniper	<i>Juniperus</i> spp.
Juniper, Common	<i>Juniperus communis</i> L.
Juniper, Rocky Mountain	<i>Juniperus scopulorum</i> Sarg.
Larch, Alpine	<i>Larix lyallii</i> Parl.
Maple	<i>Acer</i> spp.
Maple, Douglas	<i>Acer glabrum</i> Torr. var. <i>douglasii</i> (Hook.) Dipp.
Maple, Manitoba	<i>Acer negundo</i> L.
Miscellaneous	Misc. (Denotes plants and shrubs)
Pine	<i>Pinus</i> spp.
Pine, Limber	<i>Pinus flexilis</i> James
Pine, Lodgepole	<i>Pinus contorta</i> Dougl. var. <i>latifolia</i> Engelm.
Poplar, Balsam	<i>Populus balsamifera</i> L.
Spruce	<i>Picea</i> spp.
Spruce, Engelmann	<i>Picea engelmannii</i> Parry
Spruce, White	<i>Picea glauca</i> (Moench) Voss
Willow	<i>Salix</i> spp.

## ARACHNIDA

Family Genus	Species	Host	Number of Collections	Stage Collected
-----------------	---------	------	--------------------------	--------------------

---

## TETRANYCHIDAE

Oligonychus	ununguis Jac.	Engelmann spruce	1	
-------------	---------------	------------------	---	--

## COLEOPTERA

Family Genus	Species	Host	Number of Collections	Stage Collected
ANOBIIDAE				
Utobium	elegans Horn	Douglas fir	1	A
BUPRESTIDAE				
Agrilus sp.		Willow	1	A
Dicerca	tenebrosa Kby.	Lodgepole pine	1	A
Melanophila	drummondi Kby.	Engelmann spruce	1	A
BYRRHIDAE				
Byrrhus sp.		White spruce	1	A
CANTHARIDAE				
Podabrus sp.		Lodgepole pine	2	A
		White spruce	1	A
		Alpine fir	1	A
Silis sp.		Misc.	1	A
CARABIDAE				
Notiophilus sp.		White spruce	1	A
CERAMBYCIDAE				
Acmaeops sp.		Limber pine	1	A
	pratensis Laich.	-	1	A
	proteus Kby.	Misc.	1	A
		Lodgepole pine	1	A
Anoplodera	aspera Lec.	White spruce	1	A
	chrysocoma Kby.	Alder	1	A
	crassipes Lec.	White spruce	1	A
	sexmaculata Linn.	White spruce	2	A
	tibialis Lec.	White spruce	1	A
		Alpine fir	2	A
		Misc.	1	A



## COLEOPTERA

Anthophilax	mirificus Bland.	White spruce	1		A
Asemum	nitidum Lec.	Lodgepole pine	1		A
		White spruce	1		A
Gaurotes	cressoni Bland.	Douglas fir	1		A
Gonocallus	collaris Kby.	Douglas fir	1		A
		Balsam fir	1		A
		Misc.	1		A
Megasemum	asperum Lec.	Lodgepole pine	1		A
Monochamus	scutellatus Say	Lodgepole pine	1	L	
		Engelmann spruce	1		A
Neoclytus	muricatulus Kby.	Alpine fir	1		A
Rhagium	inquisitor Linn.	Lodgepole pine	1		A
Xylotrechus	undulatus Say	Limber pine	1		A
CHRYSOMELIDAE					
Altica sp.		White spruce	1		A
		Alder sp.	1		A
		Misc.	1	L	A
Chrysomela	aeneicollis Schffr.	Willow	22	L P	A
		White spruce	1		A
		Misc.	1		A
	falsa Brown	Spruce sp.	1		A
	mainensis interna Brown	Fir sp.	1		A
		Alder sp.	2	L P	A
	schaefferi Brown	Willow	5	L P	A
White spruce		1	L		
Entomoscelis	americana Brown	Misc.	1		A
Orsodacne	atra Ahr.	Alpine fir	1		A
		White spruce	2		A
Pachybrachys sp.		Willow	1		A
Pyrrhalta	carbo Lec.)	White spruce	1		A
		Lodgepole pine	1		A
	punctipennis (Mann.)	Willow	2		A

## COLEOPTERA

Syneta sp.		White spruce	3	A	
		Alpine fir	2	A	
		Douglas fir	4	A	
	carinata Mann.		White spruce	1	A
			Lodgepole pine	1	A
			Douglas fir	1	A
	pilosa Brown		Western hemlock	1	A
			Balsam fir	1	A
			Lodgepole pine	2	A
			White spruce	8	A
			Douglas fir	4	A
		Alpine fir	3	A	
CICINDELIDAE					
Cicindela sp.		Misc.	1	A	
CLERIDAE					
Thanasimus	undulatus Say	Engelmann spruce	1	A	
COCCINELLIDAE					
Adalia	frigida Schn.	Dwarf birch	1	A	
		Misc.	1	P	
Anisocalvia	duodecimmaculata Gebli.	White birch	1	A	
Coccinella sp.		Siberian caragana	1	A	
	transversoguttata richardsoni Brown	Siberian caragana	1	A	
Hippodamia	parenthesis Say	White birch	1	A	
	quinquesignata quinquesignata Kby.	Siberian caragana	1	A	
Mulsantina	picta Rand.	Balsam fir	1	L	
CUCUJIDAE					
Cucujus	clavipes F.	Lodgepole pine	1	A	
CURCULIONIDAE					
Brachyrhinus	ovatus Linn.	Lodgepole pine	1	A	
		Misc.	1	A	

## COLEOPTERA

Cryptorhynchus	lapathi Linn.	Willow	1		A	
Hylobius sp.		Lodgepole pine	10	L	A	
		Douglas fir	1		A	
	piceus DeG.	Lodgepole pine	1		A	
Magdalis sp.		Lodgepole pine	1		A	
		Willow	1		A	
		White birch	1		A	
		Misc.	1		A	
Panscopus	pallidus Buch.	Misc.	1		A	
Pissodes sp.		Engelmann spruce	2			
		White spruce	9	L P	A	
		Alpine fir	1		A	
		Lodgepole pine	1			
		engelmanni Hopk.	White spruce	13	L P	A
			Lodgepole pine	1		A
		schwarzi Hopk.	Lodgepole pine	2		A
Scythropus sp.		Lodgepole pine	1		A	
		elegans Couper	Douglas fir	1		A
Trichalophus sp.		Alder sp.	1		A	
ELATERIDAE						
Agriotes sp.		White spruce	1		A	
		tardus Brown	White spruce	2		A
Ampedus		nigrinus Hbst.	Douglas fir	1	A	
			White spruce	1	A	
		pullus Germ.	White spruce	1		A
Ctenicera sp.		White spruce	4		A	
		Dwarf birch	2		A	
		White birch	1		A	
		Misc.	1		A	
		Lodgepole pine	2		A	
		Douglas fir	2		A	
		aereipennis Kby.	Lodgepole pine	1		A
		angusticollis Mann.	White spruce	1		A

## COLEOPTERA

	<i>cruciata festiva</i> Lec.	White spruce	1	A
	<i>hoppingi</i> Van D.	Dwarf birch	1	A
	<i>lobata caricina</i> Esch.	Lodgepole pine	1	A
	<i>lobata pygmaea</i> V.D.	White spruce	1	A
	<i>lutescens</i> Fall	White spruce	1	A
	<i>nitidula</i> Lec.	White spruce	1	A
	<i>ochreipennis</i> Lec.	Lodgepole pine	2	A
		White spruce	1	A
		Douglas fir	1	A
	<i>propola propola</i> Lec.	White birch	1	A
	<i>pudica</i> Brown	Spruce sp.	1	A
	<i>resplendens</i>	White spruce	1	A
	<i>resplendens</i> Esch.	Alpine fir	1	A
	<i>triundulata</i> Rand.	White spruce	1	A
		Douglas fir	1	A
<i>Conoderus</i>	<i>debilis</i> Lec.	Douglas fir	1	A
<i>Dalopius</i> sp.		White spruce	1	A
		Alpine fir	1	A
<i>Eanus</i>	<i>decoratus</i> Mann.	White spruce	1	A
	<i>estriatus</i> Lec.	Douglas fir	1	A
<i>Lacon</i>	<i>brevicornis</i> Lec.	White spruce	1	A
	<i>profesus</i> Cand.	Alpine fir	1	A
<i>Limonius</i>	<i>aeger</i> Lec.	Willow	1	A
		Lodgepole pine	4	A
		White spruce	7	A
		Alpine fir	1	A
		Douglas fir	1	A
<i>Negastrius</i>	<i>tumescens</i> Lec.	White spruce	1	A
<i>Sericus</i>	<i>brunneus</i> Linn.	White spruce	2	A
HISTERIDAE				
	<i>Isolamalus</i> sp.	Lodgepole pine	2	A

## COLEOPTERA

	<i>mancus</i> Csy.	Alpine fir	1		A
	<i>Plegaderus</i> sp.	Lodgepole pine	1		A
LAMPYRIDAE					
	<i>Lucidota</i> sp.	Lodgepole pine	2		A
		Willow	2		A
		Alder sp.	1		A
LEIODIDAE					
	<i>Anisotoma</i> sp.	Lodgepole pine	1		A
MELANDRYIDAE					
	<i>Scotochroa basalis</i> Lec.	White spruce	1		A
		Misc.	1		A
MORDELLIDAE					
	<i>Anaspis nigrina</i> Csiki.	Misc.	1		A
SCARABAEIDAE					
	<i>Dichelonyx</i> sp.	Douglas fir	1		A
	<i>backi</i> Kby	Lodgepole pine	1		A
		White spruce	2		A
		Birch sp.	1		A
		Willow	1		A
		Douglas fir	1		A
	<i>vicina columbiana</i> Hopp.	Dwarf birch	1		A
SCOLYTIDAE					
	<i>Dendroctonus</i> sp.	Engelmann spruce	1		A
		Lodgepole pine	3		A
		Alpine fir	2		A
		White spruce	1	L P	
	<i>murrayanae</i> Hopk.	Lodgepole pine	3		A
	<i>ponderosae</i> Hopk.	Lodgepole pine	11	L	A
	<i>pseudotsugae</i> Hopk.	Douglas fir	1		A
		Lodgepole pine	1		A
	<i>rufipennis</i> Kirby	White spruce	15	L	A
		Engelmann spruce	2		A

## COLEOPTERA

Dryocoetes sp.	White spruce	2		A
affaber Mann.	White spruce	10		A
	Engelmann spruce	1		A
	Lodgepole pine	2		A
autographus Ratz.	Lodgepole pine	1		A
	White spruce	1		A
confusus Sw.	Alpine fir	2		A
Hylurgops	rugipennis Mann.	Lodgepole pine	7	L A
Ips sp.	White spruce	5		A
	Engelmann spruce	2		A
	Lodgepole pine	4		A
amiskwienis G. Hopk.	Engelmann spruce	1		A
borealis Sw.	White spruce	1		A
	Engelmann spruce	1		A
guildi Blackm.	Lodgepole pine	5		A
engelmanni Sw.	Engelmann spruce	1		A
latidens Lec.	Lodgepole pine	1		A
mexicanus Hopk.	Lodgepole pine	1		A
oregoni Eich.	Lodgepole pine	2		A
perturbatus Eich.	Engelmann spruce	1		A
	White spruce	2		A
pini Say	Lodgepole pine	7	L P	A
semirostris G. Hopk.	Engelmann spruce	2		A
yohoensis Sw.	White spruce	3		A
	Engelmann spruce	2		A
Orthotomicus sp.	Lodgepole pine	1		A
vicinus Lec.	White spruce	1		A
Pityogenes	knechteli Sw.	Lodgepole pine	1	A
Pityokteines	minutus Sw.	Balsam fir	1	A

## COLEOPTERA

Polygraphus	rufipennis Kby.	Lodgepole pine	2		A	
		White spruce	6		A	
		Engelmann spruce	1		A	
Scierus	annectens Lec.	White spruce	4		A	
Scolytus sp.		Lodgepole pine	1		A	
		piceae Sw.	Engelmann spruce	1		
Trypodendron sp.		Lodgepole pine	4		A	
		lineatum Olivier	White spruce	2		A
			Lodgepole pine	3	L P	A
	rufitarsis (Kby.)	Lodgepole pine	1		A	
Taenioglyptes	ruficollis ruficollis Hopk.	Alpine fir	2			

## TENEBRIONIDAE

Bius sp.		White spruce	1		A
Corticeus sp.		Lodgepole pine	4		A
		White spruce	1		A

## DIPTERA

Family Genus	Species	Host	Number of Collections	Stage Collected
<b>CECIDOMYIDAE</b>				
Dasineura	balsamicola Lintn.	Alpine fir	2	L P
Rhabdophaga sp.		Willow	1	
	swainei Felt	White spruce	2	
<b>DOLICHOPODIDAE</b>				
Campsicnemus sp.		Lodgepole pine	1	L
<b>SYRPHIDAE</b>				
Metasyrphus sp.		Misc.		L
	lapponicus Zett.	Lodgepole pine	2	L P
		White spruce	1	L
		Maple sp.	1	L



## HEMIPTERA

Family Genus	Species	Host	Number of Collections	Stage Collected
<b>MIRIDAE</b>				
Deraeocoris sp.		White spruce	1	A
		Lodgepole pine	1	A
	barberi Kngt.	Douglas fir	1	A
Lygus sp.		Willow	1	A
<b>PENTATOMIDAE</b>				
Chlorochroa	ligata Say	Lodgepole pine	1	A

## HOMOPTERA

Family	Genus	Species	Host	Number of Collections	Stage Collected	
APHIDIDAE						
	Aphis	sp.	Apple sp.	1	L	
	Cinara	sp.	Alpine larch	2	L A	
			Alpine fir	1	L	
			Pine sp.	1	A	
			Lodgepole pine	1	A	
		medispinosa G. & P.	Douglas fir	1	L	
	Pemphigus	sp.	Balsam poplar	1	L	
	Thecabius	populi-monilis Riley	Balsam poplar	2		
CERCOPIDAE						
	Aphrophora	sp.	Spruce sp.	1	A	
		signoretii Fitch	Spruce sp.	1	A	
			Lodgepole pine	1	A	
CICADELLIDAE						
	Idiocerus	sp.	Pine sp.	1	A	
CIXIIDAE						
	Cixius	basalis Vand.	White spruce	1	A	
ADELGIDAE						
	Adelges	sp.	Douglas fir	1		
			Lodgepole pine	1		
			Engelmann spruce	1	L A	
			Limber pine	1	L A	
		abietis Linn.	White spruce	2		
		cooleyi Gill.	White spruce	18	L A	
			Douglas fir	6	E L A	
			Engelmann spruce	2		
			Alpine fir	1	L	
			Spruce sp.	2		
	Pineus	pinifoliae Fitch	White spruce	3		
			Engelmann spruce	1		

## HYMENOPTERA

Family Genus	Species	Host	Number of Collections	Stage Collected
<b>CHRYSIDIDAE</b>				
Hedychridium sp.		Willow	1	L
<b>CIMBICIDAE</b>				
Trichiosoma sp.		Alder sp.	2	L
		Willow	4	L
Zaraea sp.		Lodgepole pine	1	L
<b>DIPRIONIDAE</b>				
Neodiprion sp.		White spruce	23	L P
		Engelmann spruce	1	L
		Spruce sp.	2	L
		Lodgepole pine	26	L P
		Douglas fir	1	L P
		Alpine fir	1	P
	abietis Harr.	White spruce	10	L
		Engelmann spruce	1	L
		Alpine fir	1	L
<b>PAMPHILIIDAE</b>				
Acantholyda sp.		White spruce	6	L
		Lodgepole pine	7	L
		Alpine fir	1	L
Cephalcia sp.		Lodgepole pine	4	L
<b>TENTHREDINIDAE</b>				
Hemichroa	crocea Four.	Alder sp.	1	L
Nematus sp.		Dwarf birch	2	L
		Willow	1	
	ventralis Say	Willow	2	L
Pikonema sp.		White spruce	1	L
	alaskensis Roh.	White spruce	14	L P
		Spruce sp.	1	L
		Lodgepole pine	4	L

## HYMENOPTERA

dimmockii Cress.	White spruce	49	L	P
	Engelmann spruce	1	L	
	Spruce sp.	3	L	
	Douglas fir	2	L	
	Lodgepole pine	2	L	
Tenthredo sp.	White spruce	1		P
XYELIDAE				
Pleroneura sp.	Douglas fir	1	L	
	Alpine fir	1		
borealis Felt	Alpine fir	18	L	

## LEPIDOPTERA

Family Genus	Species	Host	Number of Collections	Stage Collected
<b>AEGERIIDAE</b>				
Vespamia sp.		White spruce	1	L
		Alpine fir	1	L
<b>AGARISTIDAE</b>				
Alypia	langtoni Couper	Misc.	1	L
<b>ARCTIIDAE</b>				
Halisidota	maculata Harr.	White spruce	1	L
Lexis	bicolor Grt.	Douglas fir	2	L
<b>BLASTOBASIDAE</b>				
Holcocera	immaculella McD.	Common juniper	1	L
<b>DREPANIDAE</b>				
Drepana	bilineata Pack.	Alder sp.	1	L
<b>GELECHIIDAE</b>				
Chionodes	continuella Zell.	White spruce	1	L
Compsolechia	niveopulvella Cham.	Trembling aspen	1	L
Eucordylea	canusella Free.	Lodgepole pine	11	L
	starki Free.	Lodgepole pine	25	L
Recurvaria sp.		White spruce	3	L
		Lodgepole pine	19	L P
<b>GEOMETRIDAE</b>				
Biston	cognataria Gn.	Misc.	1	L
		Alder sp.	1	L
		Willow	1	L
Brephos	infans Moesch.	Dwarf birch	1	L

Campaea	perlata Gr.	Alder sp.	2	L	A	
		White spruce	2	L		
		Balsam fir	1	L		
		Misc.	2	L		
		Douglas fir	1	L		
Caripeta	angustiorata Wlk.	Lodgepole pine	16	L		
	divisata Wlk.	White spruce	3	L		
		Douglas fir	1	L		
Cosymbia	pendulinaria Gn.	Alder sp.	2	L		
Deilinia sp.		Willow	1	L		
	erythemaria erythemaria Gn.	Willow	1	L		
Dysstroma sp.		Misc.	2	L		
	citrata Linn.	Alder sp.	1	L		
Enypia	moillieti Blkmre.	Douglas fir	3	L		
		White spruce	1	L		
	venata Grt.	Engelmann spruce	1	L		
Epirrita	autumnata omissa Harr.	White spruce	10	L		
		Engelmann spruce	6	L		
		Alpine fir	14	L		
		Douglas fir	13	L		
		Mountain hemlock	1	L		
	Alder sp.	1	L			
Eupithecia sp.		White spruce	4	L		
		Juniper sp.	1	L		
		Common juniper	1	L		
		arceuthata Frey.	Common juniper	1	L	
	filmata Pears.		White spruce	11	L	
			Douglas fir	1	L	
			Alpine fir	2	L	
			Lodgepole pine	1	L	
	luteata Pack.		Douglas fir	6	L	
			White spruce	13	L	
			Western hemlock	1	L	
			Balsam fir	1	L	
		Lodgepole pine				

## LEPIDOPTERA

	niphadophilata Dyar	Common juniper	8	L
		Rocky Mountain juniper	1	L
	ornata Hlst.	Lodgepole pine		L
	palpata Pack.	Spruce sp.	1	L
		Lodgepole pine	1	L
	perfusca kootenaiata Dyar	Alder sp.	1	L
	satyrata Hbn.	Misc.	1	L
	transcanadata Mack.	White spruce	1	L
	perfusca alberta Tayl.	Alder sp.	1	L
	satyrata dodata Tayl.	Misc.	1	L
Hydriomena	furcata Thun.	Spruce sp.	2	L
		White spruce	1	L
Itame sp.		Alder sp.	1	L
	anataria Swett	White spruce	1	L
	bitactata Wlk.	Alder sp.	1	L
	denticulodes Hlst.	Misc.	1	L
Lambdina	fiscellaria fiscellaria Gn.	Western hemlock	1	L
Lobophora	nivigerata Wlk.	Willow	1	L
		Aspen	1	L
Lygris	destinata Moesch.	Willow	1	L
	propulsata Wlk.	White spruce	1	P
	xylina speciosa Hlst.	Lodgepole pine	1	P
Melanolophia	imitata Wlk.	White spruce	1	L
Metanema	inatomaria Gn.	Willow	1	L
Nyctobia	limitaria Wlk.	Lodgepole pine	1	L
		Willow	3	L
		White spruce	12	L
		Douglas fir	1	L
		Alpine fir	2	L
		Hemlock sp.	1	L

## LEPIDOPTERA

Operophtera	bruceata Hlst.	Misc.	1	L
		Douglas maple	1	L
		Manitoba maple	1	L
		Willow	1	L
Plagodia	phlogosaria approximaria Dyar	Alder sp.	1	L
Plemyria	georgii Hlst.	Alder sp.	1	L
Protoboarmia	porcelaria indicataria Wlk.	Alpine fir	1	L
Rheumaptera	hastata Linn.	Dwarf birch	1	L
Selenia	alciphearia Wlk.	Alder sp.	1	L
		Willow	1	L
Semiothisa	granitata Gn.	Spruce sp.	3	L
		White spruce	23	L
		Douglas fir	7	L
		Western hemlock	1	L
		Balsam fir	2	L
		Lodgepole pine	1	L
		Alpine fir	6	L
		perplexa McD.	Lodgepole pine	16
Sicya	macularia Harr.	Misc.	1	L
Spargania	magnoliata Gn.	Misc.	1	L
Stenoporpia sp.	satisfacta B. & McD.	White spruce	1	L
		White spruce	2	L
Synaxis	jubararia Hlst.	White spruce	1	L
Tetracis	cachexiata Gn.	Lodgepole pine	1	P
Thera	otisi Dyar	Common juniper	10	
		Balsam fir	1	
		Rocky Mountain juniper	2	
		White spruce	2	
		Douglas fir	1	
Venusia	pearsalli Dyar	Alder sp.	1	L
GRACILLARIIDAE				
Phyllocnistis	populiella Cham.	Aspen	18	L P



## LEPIDOPTERA

## LASIOCAMPIDAE

Epicnaptera	americana Harr.	Misc.	1	L
		Willow	1	L
		Alder sp.	1	L
Malacosoma	californicum pluviale (Dyar.)	Aspen	1	L P
		disstria Hbn.	Willow	7
		Alder sp.	2	L
		White birch	1	L
		Birch sp.	1	L

## LYCAENIDAE

Incisalia	eryphon Bdv.	Lodgepole pine	1	L
-----------	--------------	----------------	---	---

## LYMANTRIIDAE

Orgyia	antiqua L.	Lodgepole pine	1	L
Parorgyia sp.	plagiata Wlk.	White spruce	1	L
		White spruce	5	L
		Engelmann spruce	2	L
		Alpine fir	1	L

## NOCTUIDAE

Achytonix sp.		White spruce	2	L
Acronicta sp.		Balsam poplar	1	L
		Willow	1	L
Andropolia	contacta Wlk.	Douglas fir	1	L
Anomogyna	elimata Gn.	White spruce	1	L
		perquiritata Morr.	White spruce	2
		Lodgepole pine	1	L
		Douglas fir	2	L
Autographa sp.		Misc.	1	L
Brachylomia	populi Stkr.	Balsam poplar	1	L
Feralia sp.	jocosa Gn.	White spruce	4	L
		Douglas fir	2	L
		White spruce	18	L

## LEPIDOPTERA

		Lodgepole pine	1	L
		Alpine fir	1	L
		Aspen	1	L
Homoglaea	carbonaria Harv.	Willow	1	L
Ipimorpha	pleonectusa Grt.	Aspen	1	L
Lithophane	georgii Grt.	Alder sp.	1	L
	petulca Grt.	White birch	1	L
Lithomoia	solidaginis germana Morr.	White spruce	1	L
		Misc.	1	L
Orthosia sp.		White spruce	1	L
	hibisci Gn.	Willow	1	L
		Alder sp.	3	L
		White spruce	1	L
	revicta Morr.	Alpine fir	1	L
Panthea	acronyctoides Wlk.	White spruce	2	L
	furcilla Pack.	Lodgepole pine	2	L
Polia	assimilis Morr.	Willow	2	L
	crisifera Wlk.	Willow	1	L
		Alder sp.	1	L
		Misc.	1	L
	ingravis Sm.	Alpine fir	1	L
Synedoida	hudsonica G. & R.	Lodgepole pine	1	L
Syngrapha sp.		Douglas fir		L
		Spruce sp.		L
		White spruce		L
		Lodgepole pine		L
	alias Ottol.	White spruce	11	L
		Engelmann spruce	4	L
		Douglas fir	5	L
	selecta Wlk.	White spruce	7	L
		Lodgepole pine	1	L
		Douglas fir	1	L
Xylena	cineritia Grt.	Misc.	1	L

P

## LEPIDOPTERA

Xylotype sp.		White spruce	3	L
		Douglas fir	1	L
	capax G. & R.	Douglas fir	1	L
Zale	duplicata largera Sm.	Lodgepole pine	6	L
NOTODONTIDAE				
Cerura sp.		Willow	2	L
Notodonta	simplaria Graef.	Willow	1	L
Pheosia	rimosa Pack.	Willow	2	L
		Balsam poplar	2	L
		Aspen	1	L
Schizura sp.		Balsam poplar	1	L
		Willow	1	L
NYCTEOLIDAE				
Nycteola	frigidana Wlk.	Lodgepole pine	1	P
NYMPHALIDAE				
Nymphalis sp.		Misc.	1	L
	antiopa L.	Willow	4	L
	milberti Godt.	Misc.	1	L
Polygonia	faunus Edw.	Alder sp.	1	L P
		Lodgepole pine	1	P
OECOPHORIDAE				
Martyrhilda	sciadopa Meyr.	Balsam poplar	1	L
OLETHREUTIDAE				
Epinotia sp.		White spruce	1	L
	albangulana Wlshm.	Alder	1	L
	medioplagata Wlshm.	Willow	1	L
	nisella Clerck	Willow	1	L
	solandriana Linn.	Birch sp.	2	L
	Alder sp.	1	L P	
	Balsam poplar	1	L	
	Aspen	1	L	

## LEPIDOPTERA

Griselda	radicana Wlshm.	White spruce	15	L	P
		Lodgepole pine	1	L	P
		Engelmann spruce	2	L	
Petrova sp.		White spruce	1	L	
		Lodgepole pine	3	L	P
Paralobesia	piceana Free.	White spruce	1	L	P
Pseudexentera	oregonana Wlshm.	Willow	1	L	
Zeiraphera sp.	canadensis Mut. & Free.	White spruce	1	L	
		Spruce sp.	1	L	
	fortunana Kft.	White spruce	15	L	
		Engelmann spruce	1	L	
		Lodgepole pine	1	L	
		Alpine fir	2	L	
		Douglas fir	1	L	
	improbana (Wlk.)	Alpine larch	1	L	A
		Engelmann spruce	5	L	
PAPLIONIDAE					
Paplio sp.		Misc.	1	L	
PHALONIIDAE					
Phalonia sp.		Common junipera	2	L	
		rutilana Hbn.	Common juniper	1	L
PYRALIDAE					
Dioryctria sp.		White spruce	1	L	
		reniculella Grt.	White spruce	1	L
SPHINGIDAE					
Celerio	gallii intermedia Kby.	Misc.	1	L	
Paonias sp.		No host	1		A
TORTRICIDAE					
Acleris	semiannula Rob.	White birch	1	L	

## LEPIDOPTERA

	<i>variana</i> Fern.	Spruce sp.	2	L		
		White spruce	62	L	P	A
		Alpine fir	24	L	P	
		Lodgepole pine	1	L		
		Engelmann spruce	15	L		
		Douglas fir	4	L	P	
		Misc.	1		P	
Archips sp.		Alpine fir	1	L		
		White spruce	1	L		
Archippus	<i>packardianus</i> Fern.	White spruce	2	L	P	
		Balsam fir	1	L		
Argyrotaenia sp.		Lodgepole pine	1	L		
Choristoneura sp.		Lodgepole pine	8	L		
		Engelmann spruce	4	L		
		Douglas fir	4	L		
	<i>biennis</i> Freeman	White spruce	95	L	P	A
		Engelmann spruce	12	L		
		Spruce sp.	6	L	P	A
		Common juniper	1	L		
		Balsam fir	9	L		
		Alpine fir	65	L	P	A
		Douglas fir	35	L	P	
		Limber pine	1	L		
		Mountain hemlock	1	L		
		Misc.	1	L		
	<i>pinus pinus</i> Free.	Lodgepole pine	1	L		
Clepsia	<i>persicana</i> Fitch	Spruce sp.	1	L		
		Engelmann spruce	1	L		
		Balsam poplar	1	L		
		Willow	1	L		
Eulia	<i>ministrana</i> Linn.	Alder sp.	1	L		
Pandemis	<i>canadana</i> Kft.	Dwarf birch	1	L		
YPONOMEUTIDAE						
Argyresthia	<i>pygmaeela</i> Hbn.	Willow	1	L		
Ocnerostoma sp.		Lodgepole pine	1	L		
Zelleria	<i>gracilariella</i> Busck.	Misc.	1	L		

## NEUROPTERA

Family Genus	Species	Host	Number of Collections	Stage Collected
HEMEROBIIDAE				
Hemerobius	humilinus Linn.	White spruce	1	A
	kokaneeanus Currie	White spruce	1	A
Wesmaelius	longifrons Wlk.	Lodgepole pine	1	A